

SELBUDEATH

Selbu is one of the names of traditional Norwegian knitting. It is a two-stranded color knitting technique, very often using the colors black and white. The most famous pattern is the Selburose; an eight-pointed star used in various garments.

Art Fiend on Ravelry has designed a beautiful version of this rose – with a little twist of death. My little sister fell in love with this chart and wanted me to make stockings for her.



Yarn:

Black and white Sisu from Sandnesgarn, 2 skeins each
50grams = 174yards/160meters

Gauge:

Fingering/4ply. 27stitches in 4inch/10cm

Needles:

Needle US 1,5/2,5mm and US 2,5/3mm. I used a 30cm circular needle, but magic loop or dpn's works fine too.

Size:

The original stocking is US 6,5/eur 37

Pattern notes:

- This pattern requires some sock-knitting experience. However, if you know how to follow a chart and you know the basic of sock knitting you should do just fine.
- The stockings are worked top down. In other words it is easier to **turn the chart upside-down** when you are knitting. Or else the heads will be upside down on the finished stocking.
- The leg fitting is done by decreasing in the sides.
- Decreases are worked as k2tog and ssk, always in black.
- Grey in the chart means no stitches.

Beginning:

Cast on 100stitches on needle US 1,5/2,5mm using whatever method you prefer. Join in the round, be careful not to twist.

k2, p2 all the way around for 30 rounds.

Change to needle US 2,5/3mm and the white yarn.

Knit **2** rounds stockinette, and decrease 2 stitches evenly= 98 stitches.

KNIT CHART 1

When knitting with two colors you must be careful to always have the same color dominant throughout the whole stocking. I used white.

When working with 2 colors, be sure to twist yarns if floats will be over 5-6 stitches apart (see the last row in the pattern)

After chart 1 you should have **66** stitches.

Heel:

Use black, work your favorite heel over the first 33 stitches (the length of one chart). The heel pattern is a repetition of the stripes in the leg. Make sure when you pick up for the gusset that the two last stitches next to the upper foot-chart is in black.

Gusset:

The Selbudeath-pattern continues on the upper-foot, while the sole is striped. The gusset decrease is also done in black, and when you have 66 stitches again you will have 2 black stitches as a border between sole pattern and foot pattern.

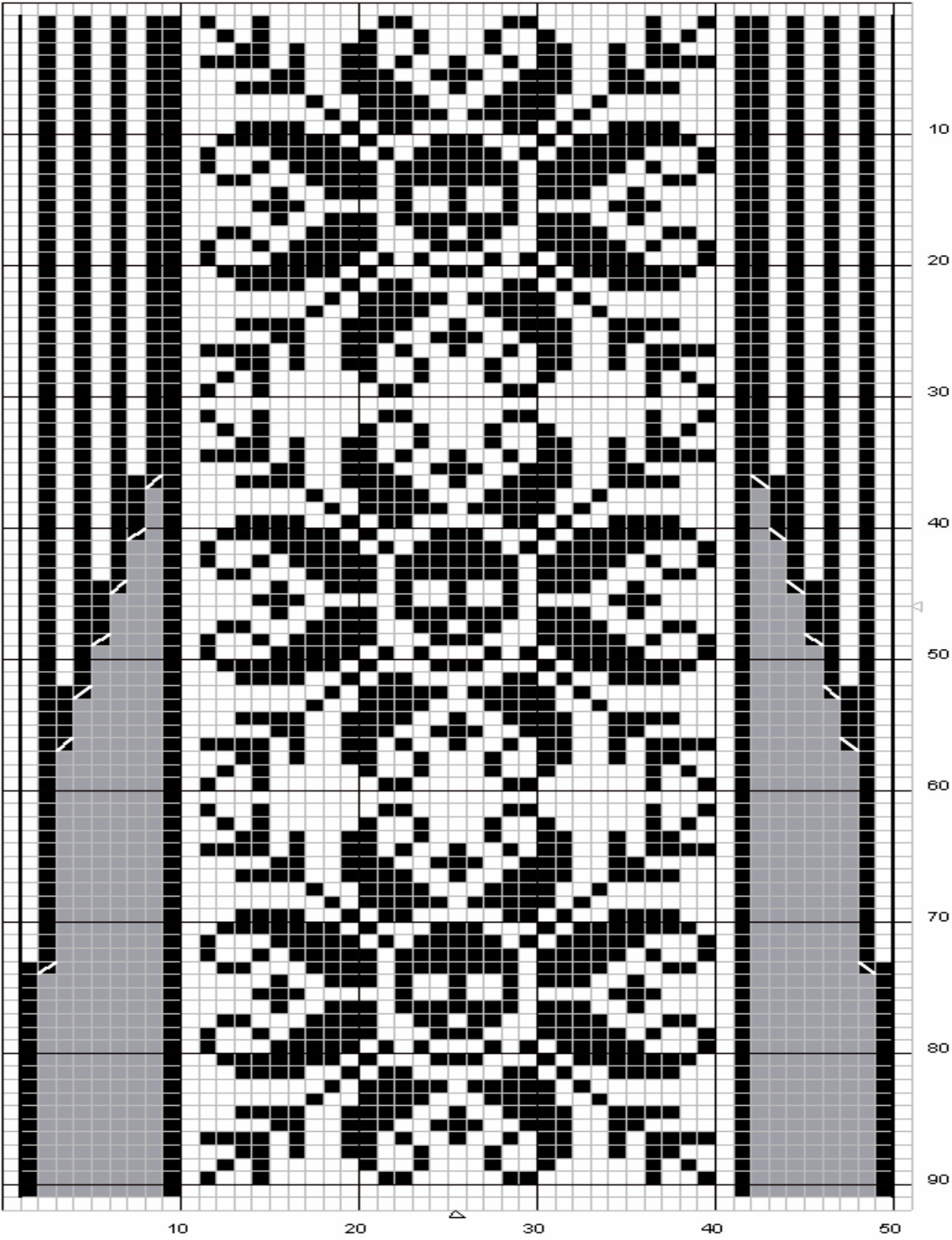
After knitting the foot pattern once you will have several options. I chose to knit a part of the chart before starting a solid black toe. I also toyed with the idea of a striped toe to match the sole pattern. Another alternative is to knit several small skulls after each other before starting the toe. There are plenty of options!

Toe:

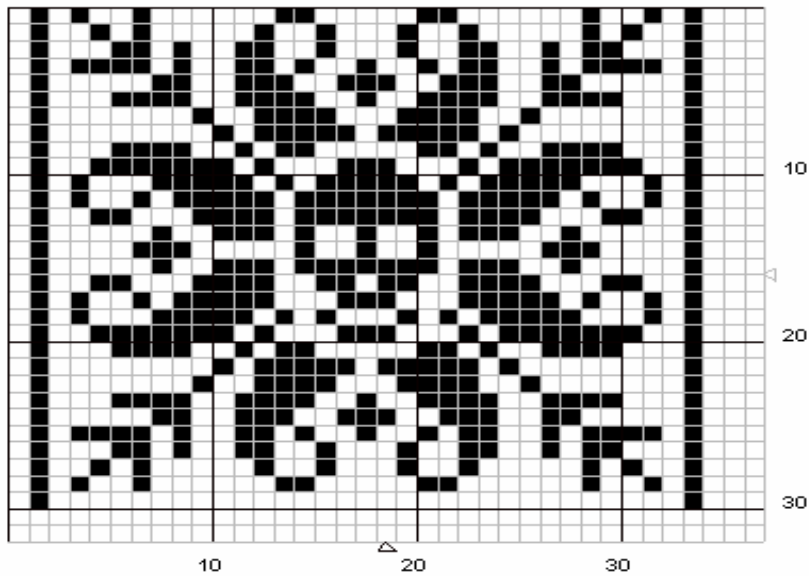
I worked the toe in solid black to pick up the color from the heel. Like the heel you can choose whatever toe you prefer. I worked a standard flat toe, Erica-style:

1. knit all stitches
2. knit to the last 3 stitches on needle 1, k2tog, k1. On needle 2: k1, ssk and knit the rest of the stitches. Repeat for needle 3 and 4.
3. repeat round 1
4. repeat round 2
5. repeat round 1
6. repeat round 2
7. repeat round 1 until you have a total of 16 stitches left. Cut yarn and graft or sew the toe.

CHART 1



FOOT PATTERN



My thanks to Art Fiend ([The Girl in Grey](#) on Ravelry) for allowing me to use her beautiful Deathflake-chart. The only modification I did was to add an extra white stitch in the eyes of the skulls, and a black and white solid stripe on each side. Her original chart and many more can be found here: <http://reliquaryarts.blogspot.com/>

Happy knitting!

If you have any questions about the pattern please send me a message on Ravelry.

Last edited 23.04.2010

Erica Grønntun

[EricaG](#) on Ravelry